



Rain tightness test equipment for IPX

serie IPX5-6



The innovation as an attitude

The company

Ineltec is a company with more than 30 years of experience in the sector and 10.000 equipment installed all around the world. Our achievements are due to the ability of offering tailored solutions to perform any kind of test.

“Technology, research and innovation are the basis for creating equipment of high reliability.”



Model

Rain tightness test equipment
for IPX5-IPX6



Rain tightness test equipment for IPX5-IPX6 made by Ineltec
to carry out tests according to the international standards.

Model

Equipment description

The IPX5 and IPX6 jet nozzle is composed of a handle that is equipped with a pressure gauge and a valve for a single flow adjustment. The nozzles are interchangeable and can be easily attached to the handle. The nozzles are made of stainless steel.

You can spray the sample with water from all directions. IPX5 specifies a nozzle with a diameter of 6.3mm and the opening of a flow of 12.5L/min. IPX6 specifies a nozzle with a 12.5mm diameter and a flow rate of 100L/min.

Designed and manufactured in accordance with IEC 60529

Volumes

01 500

01



Sectors



Aeronautical,
Automotive,
Railway



Luminary,
Watertight parts



R+D,
Technological
centers,
Universities,
Laboratories



Electronic
Telecommu-
nications,
Mechanical
constructions,



Defense,
Armament

Standards

IEC 60529

IEC 60598

CEI 60529

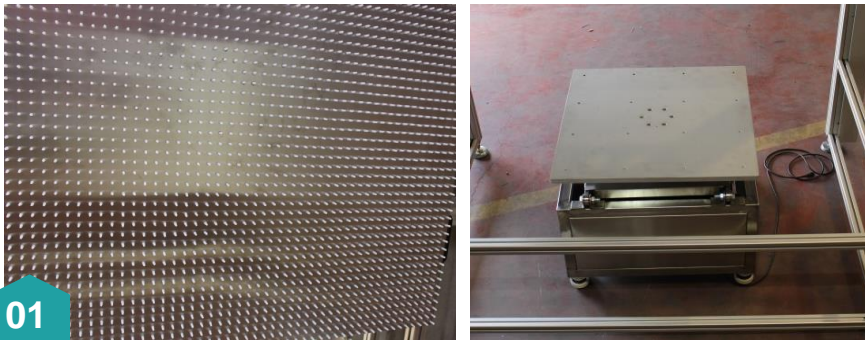
IEC 60335

Protección IPX5

Protección IPX6

Equipments characteristics

construction



01

01/ interior/exterior

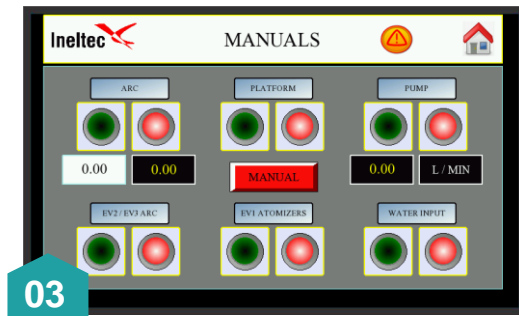
Está construido en acero inoxidable y el exterior en chapa de aluminio lacada en color blanco.



02

04/ movilidad

La máquina dispone de 4 ruedas multidireccionales con dispositivo de freno.



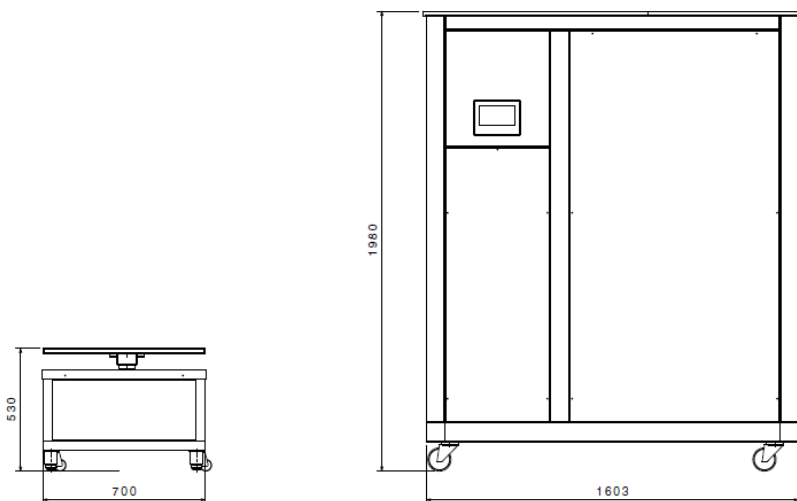
03

05/ sistema de control

El equipo se controla mediante una pantalla táctil ubicada en el exterior de la cámara.

Equipments characteristics

front / side Drawing



Measurements

Type of equipment	External dimensions HxWxD (mm) *aprox
Equipment	1960 x 1303 x 1603
Plataform	530 x 700 x 700

Consumption

Type of equipment	Rain tightness test equipment for IPX 5-6	Tension	<55 dB
Working temperature	Ambient	Pump 1 power	*
Maximum power consumed	2 Kw	Pump 2 power	*
Process type	Water tightness tests	Maximum intensity	*

*Optionally, it can be controlled the temperature of the chamber or water.

Control system

*Programmer/
Touch screen*

Characteristics programmer

- 1/ Angle of rotation of the rain bow
- 2/ Arc speed
- 3/ Arc oscillation time
- 4/ Height and speed of rotation of the plate
- 5/ Adjust water flow rate and maximum pressure
- 6/ Rain time and pause
- 7/ N° of cycles
- 8/ Programmable digital counter rain cycles
- 9/ Generator cycle testing programs

Touch screen programmer



International Presence



Range of products

Rain tightness test equipment for IPX
Serie IPX5-6 / INELTEC

ES Simulation equipment



Climatic chambers



Modular chambers



Thermal shock



Combined tests



Specials



Stability



Generator groups



Calorimetric



Corrosion - combined



Corrosion



Frost / Defrost



Tightness – rain



Tightness – air/wind



Freezer cabinet



Thermostatic bath



Furnace



Heating

Range of products

Rain tightness test equipment for IPX
Serie IPX5-6 / INELTEC

BE Testing bench



Fatigue endurance



Characterization



Pulsing pressure



Rupture



Bursting



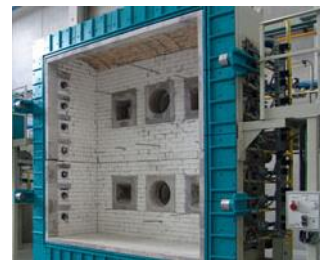
Liquid Thermal Shock



Standardization



Resistance to the fire - I



Resistance to the fire - II



Reaction to the fire - I



Reaction to the fire - II

MC Measurement and control



Artificial vision - I



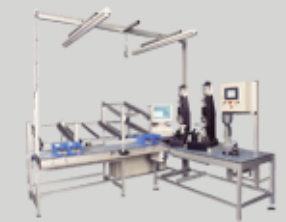
Artificial vision - II



Artificial vision - III



End of line control - I



End of line control - II



Ineltec
Spain / Barcelona
Headquarters



C/ Metal·lúrgia, 8
Pol. Ind. Les Goules
08551 Tona



T/ 0034 938 605 100
F/ 0034 938 717 463



ineltec@ineltec.es
www.ineltec.es

Follow us
on our
social networks



[twitter](#)



[Blog](#)